

**Shri M. R. Desai Arts & EELK Commerce
College Chikhli, Dist-Navsari**

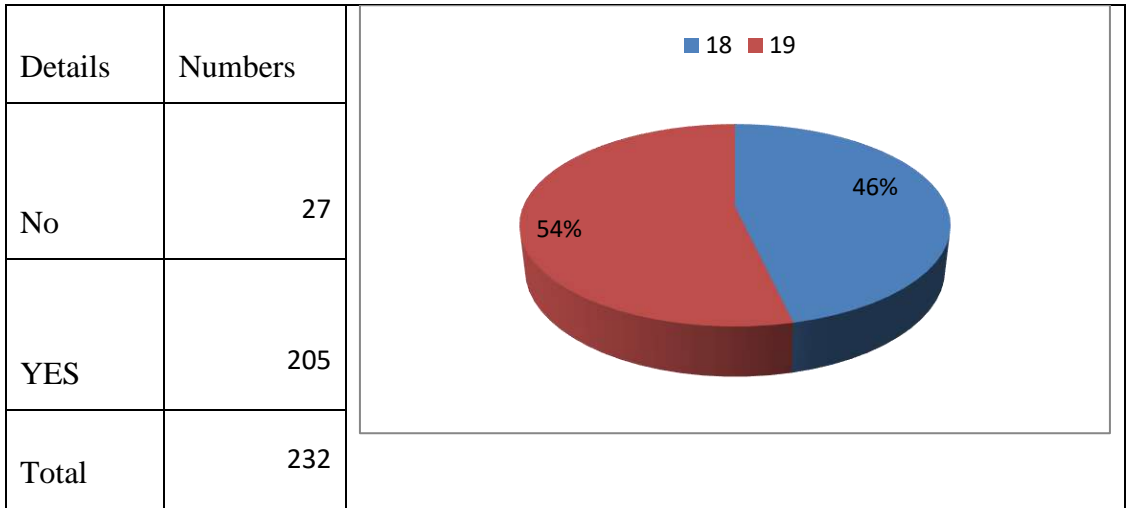


Student Satisfaction Survey (SSS)

2019-20

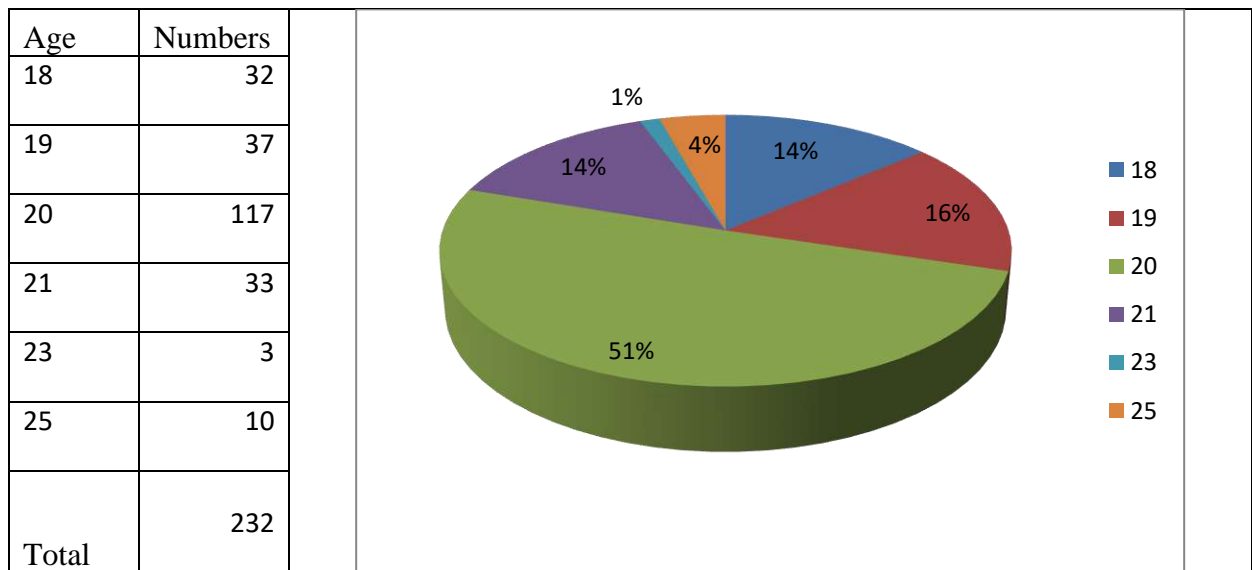
We have conducted a student satisfaction survey-2019-20. In this survey, we got responses from 232 students. An evaluation of this survey is given below.

A Please confirm this is the first and only time you answer this survey.

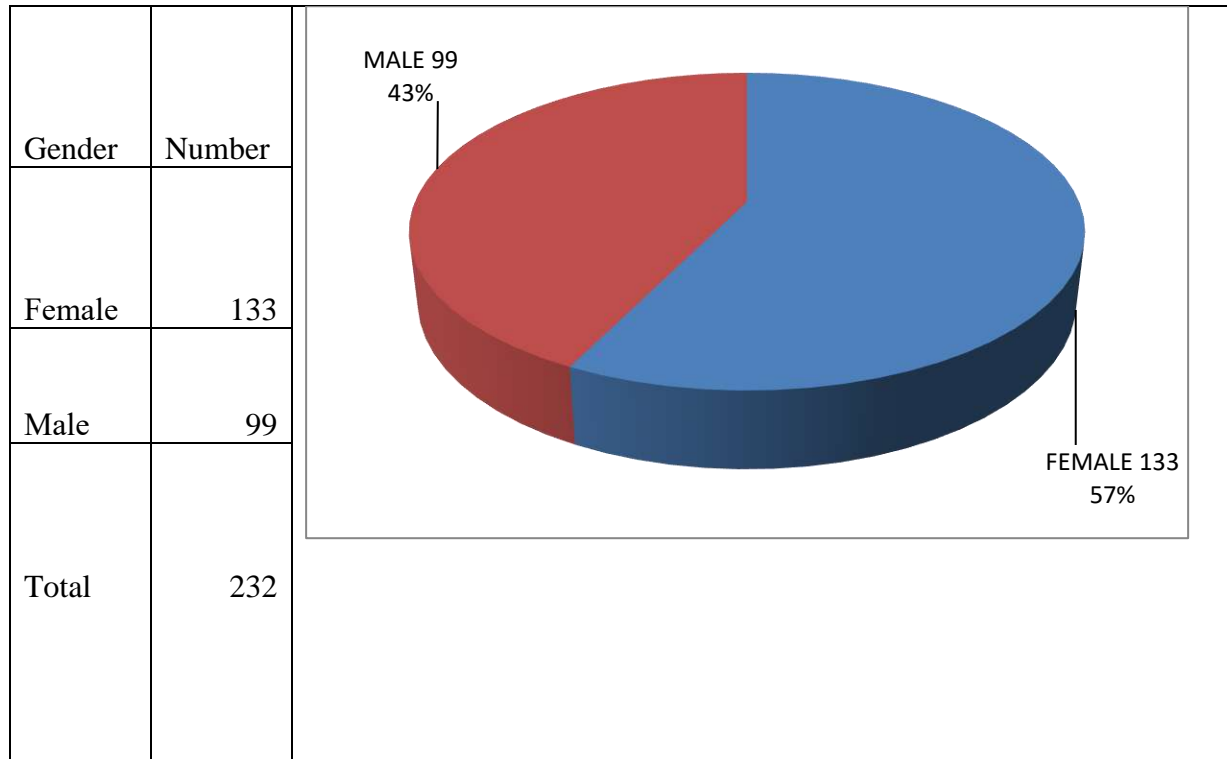


Above information, we conclude that we have 205 students responded yes and 27 students responded no.

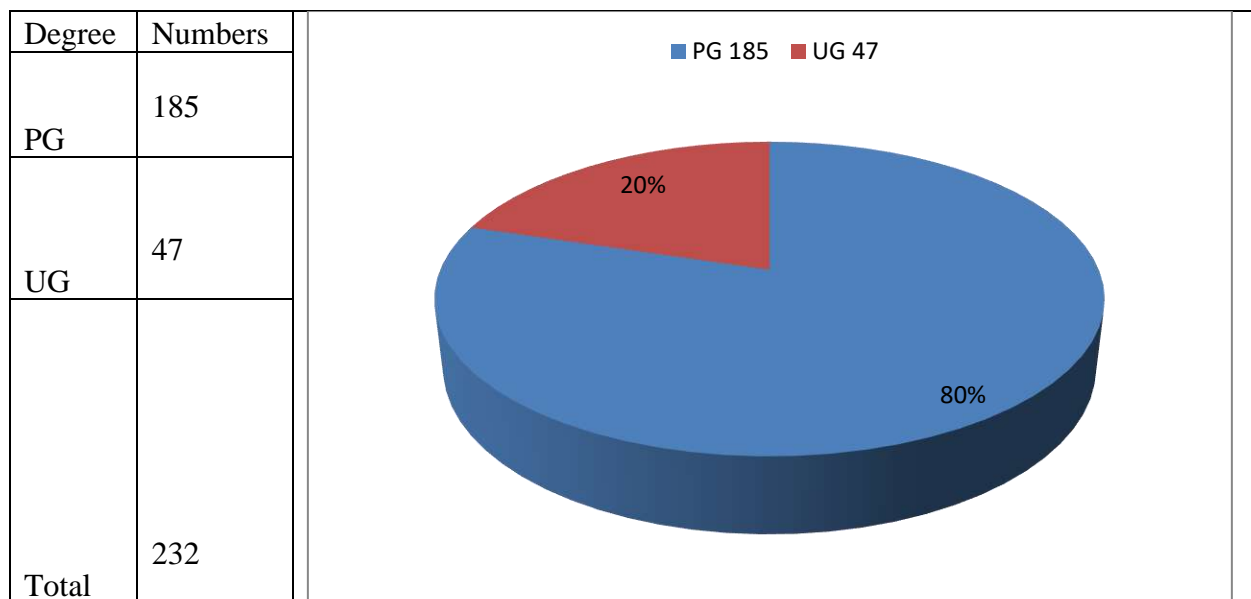
B) Age



C. Gender

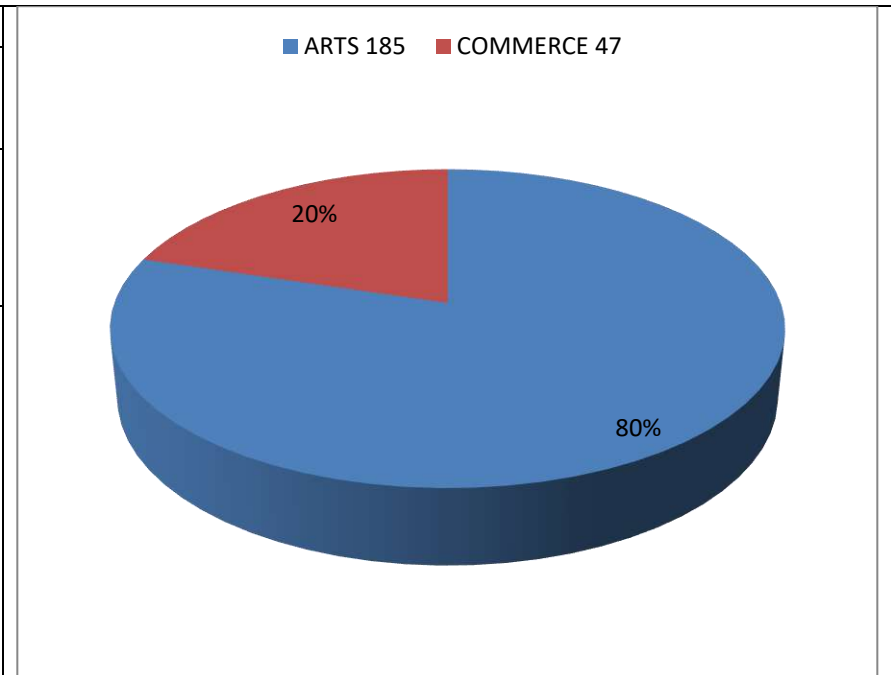


D) What degree program are you pursuing now?



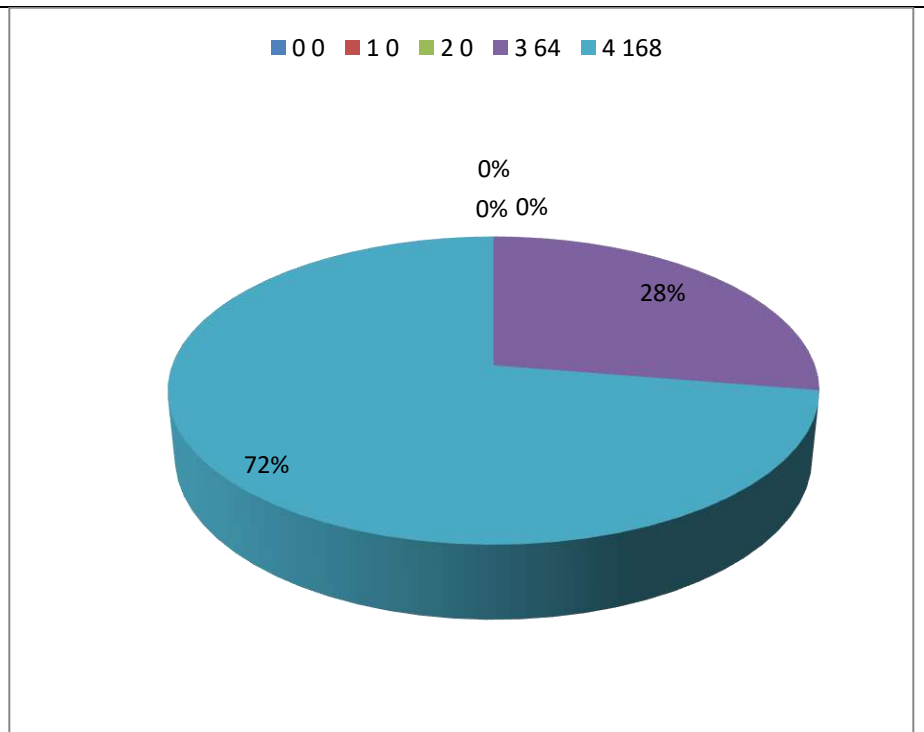
E) What subject area are you currently pursuing?

Stream	Numbers
Arts	185
Commerce	47
Total	232



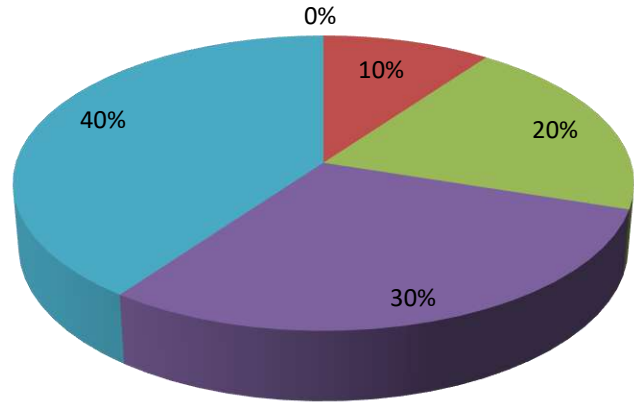
1. How much of the syllabus was covered in the class?

Scale	Numbers
0– 29% to 54%	0
1– 30 to 54%	0
2 – 55 to 69%	0
3 – 70 to 84%	64
4 – 85 to 100%	168
Totals	232



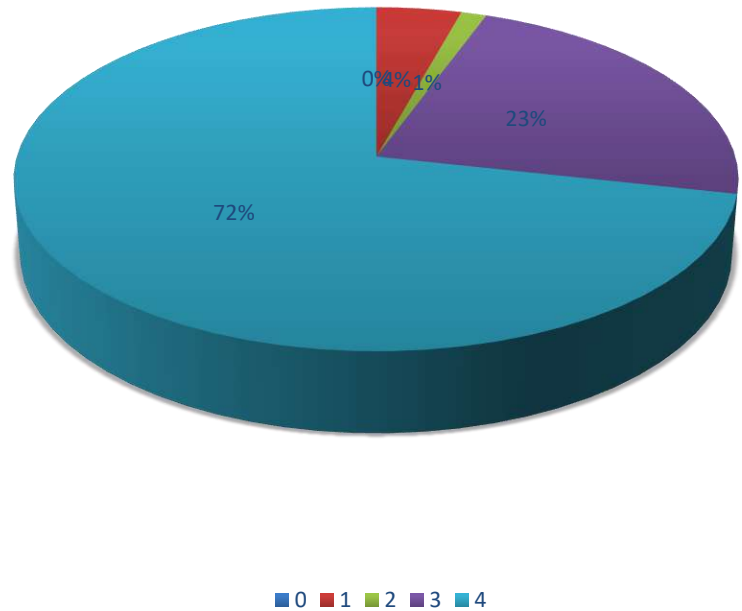
2. How well did the teachers prepare for the classes?

Scale	Numbers
0 – Won't teach at all	0
1 – Indifferently	0
2 – Poorly	20
3 – Satisfactorily	168
4 - Thoroughly	44
Total	232



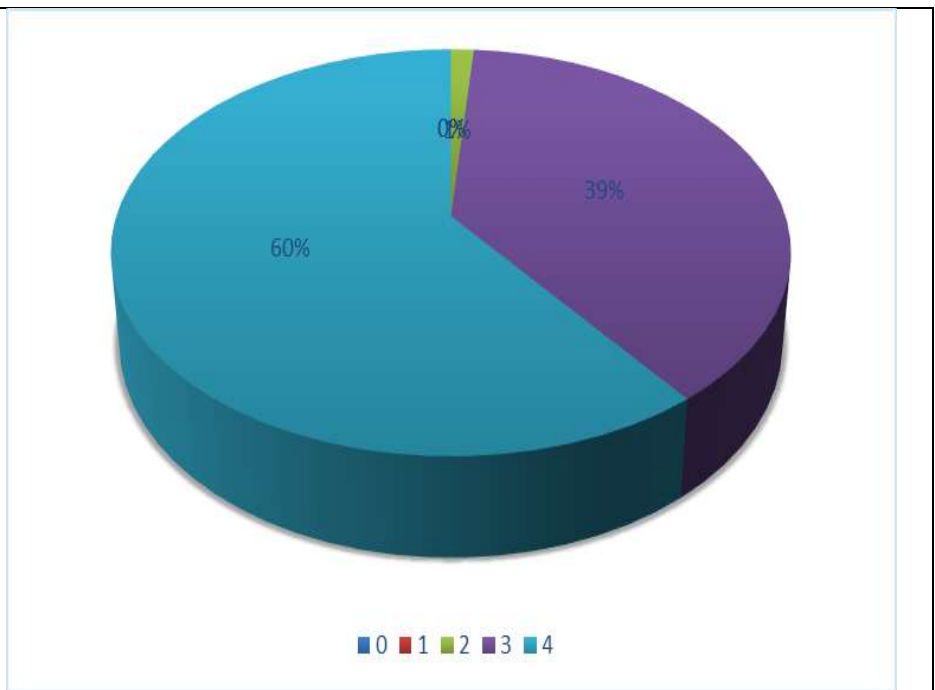
3. How well were the teachers able to communicate?

Scale	Numbers
0– Very poor communication	0
1– Generally ineffective	10
2 – Just satisfactorily	3
3 – Sometimes effective	53
4 – Always effective	166
Total	232



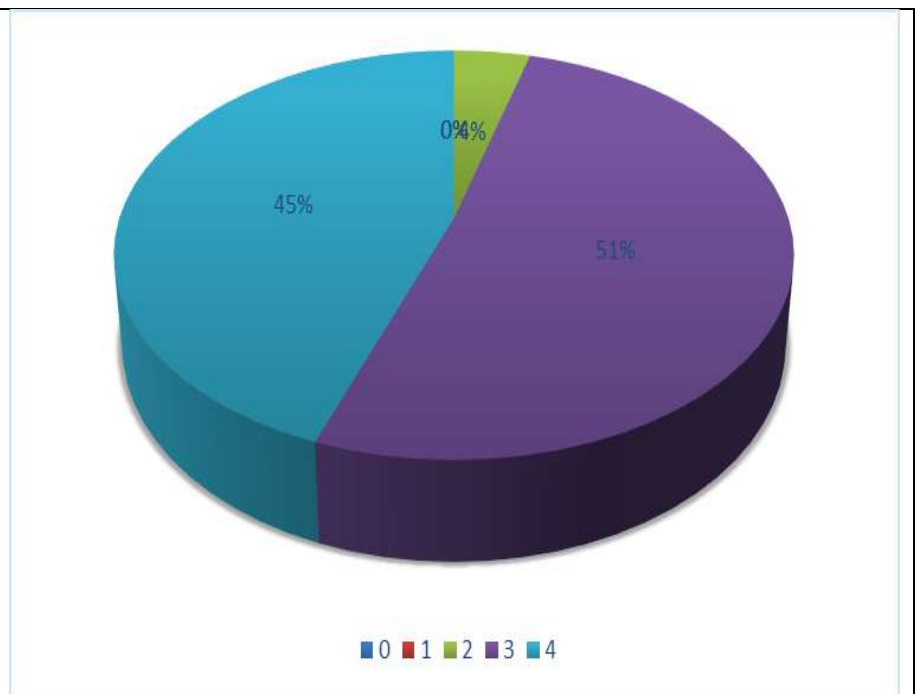
4. The teacher's approach to teaching can best be described as

Scale	Numbers
0– Poor	0
1 – Fair	0
2 – Good	3
3 – Very good	89
4– Excellent	140
Total	232



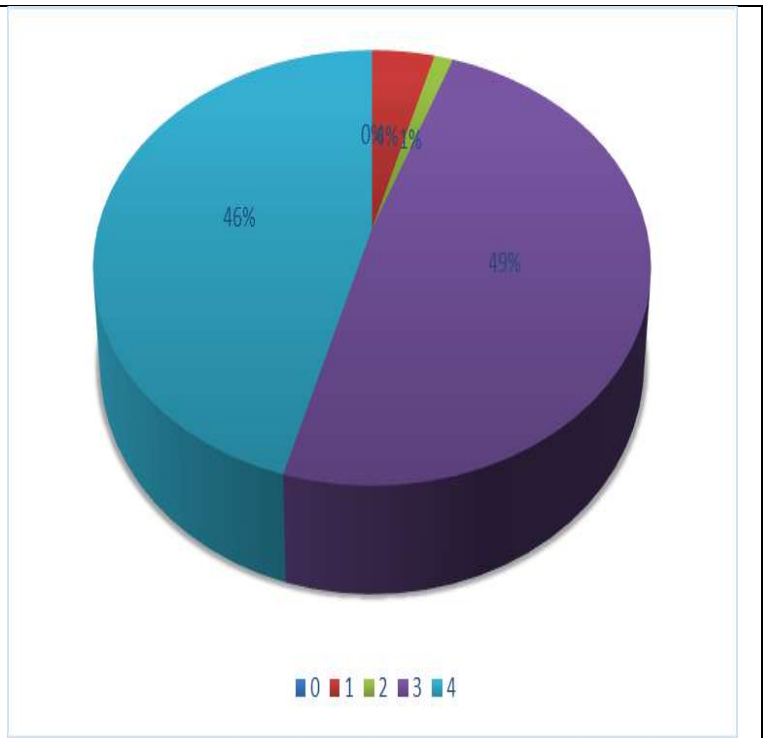
5. Fairness of the internal evaluation process by the teachers.

Scale	Numbers
0– Unfair	0
1 – Usually unfair	0
2 – Sometimes unfair	10
3 – Usually fair	119
4 – Always fair	103
Total	232



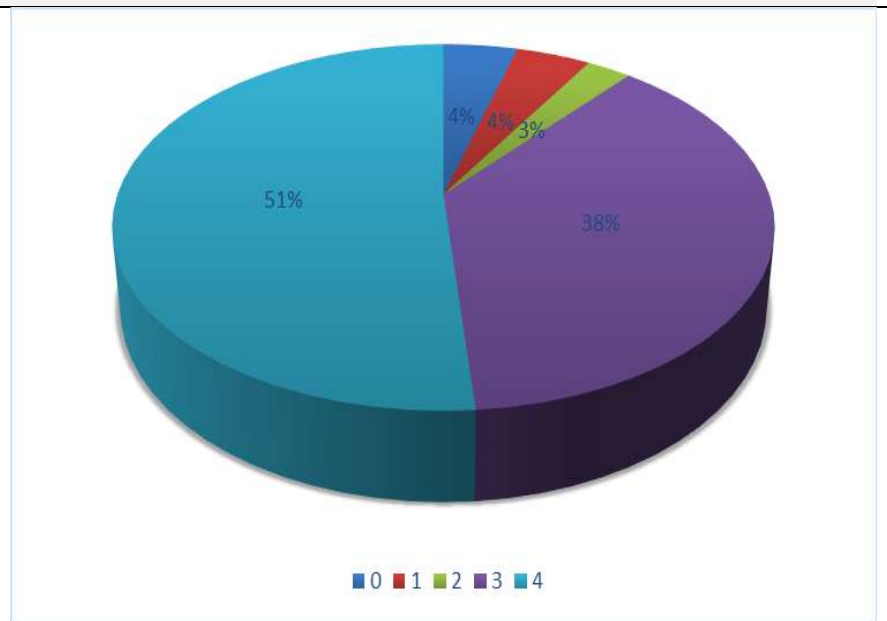
6. Was your performance in assignments discussed with you?

Scale	Number s
0 – Never	0
1 – Rarely	10
2 – Occasionally/Sometimes	3
3 – Usually	113
4 – Every time	106
Total	232



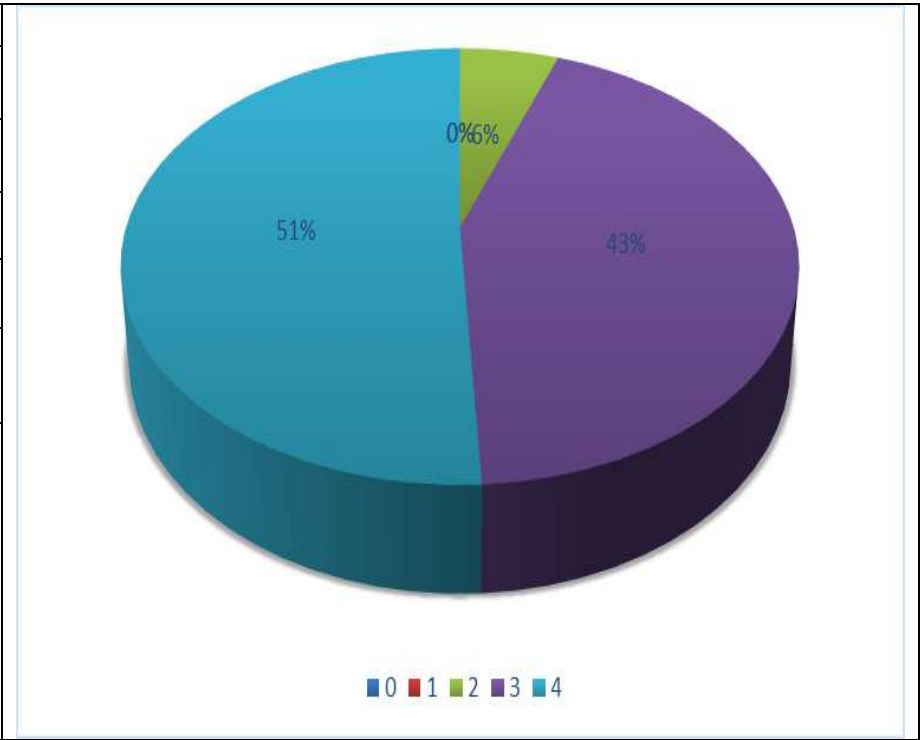
7. The institute takes active interest in promoting internship, student exchange, field visit opportunities for students.

Scale	Number s
0 – Never	10
1 – Rarely	10
2 – Sometimes	6
3 – Often	87
4 – Regularly	119
Total	232



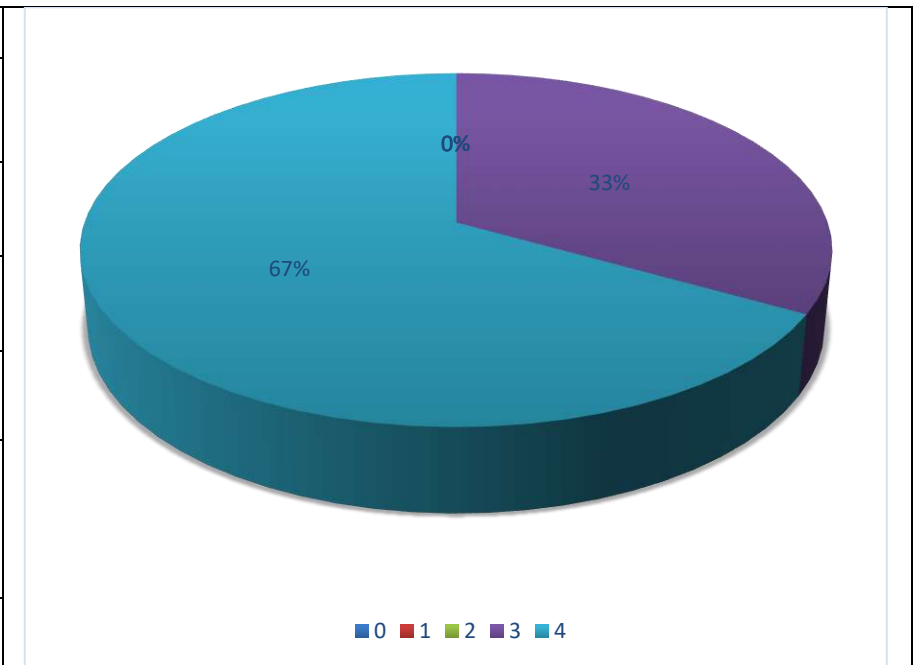
8. The teaching and mentoring process in your institution facilitates you in cognitive, social and emotional growth.

Scale	Numbers
0– Not at all	0
1 – Marginally	0
2 – Moderately	13
3 – Very well	101
4 – Significantly	118
Total	232



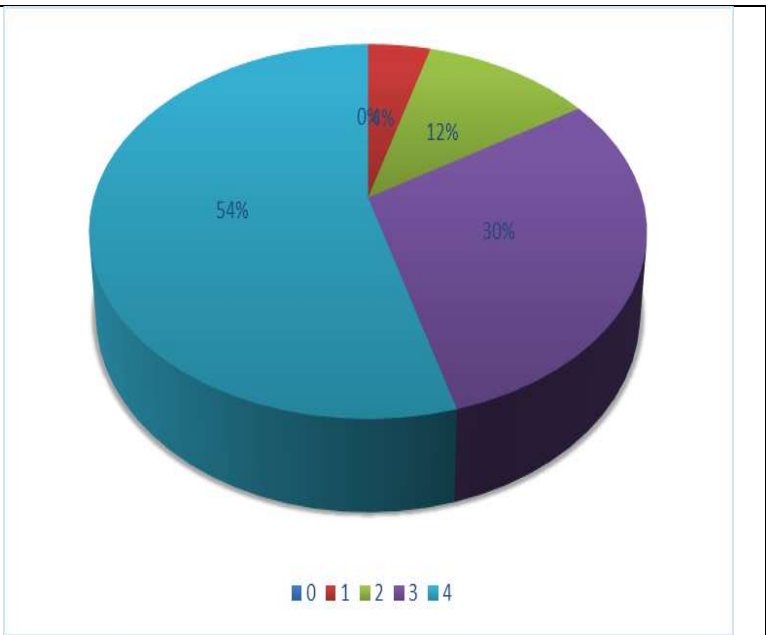
9. The institution provides multiple opportunities to learn and grow.

Scale	Numbers
0– Strongly disagree	0
1 – Disagree	10
2 – Neutral	3
3 – Agree	106
4 – Strongly agree	113
Total	232



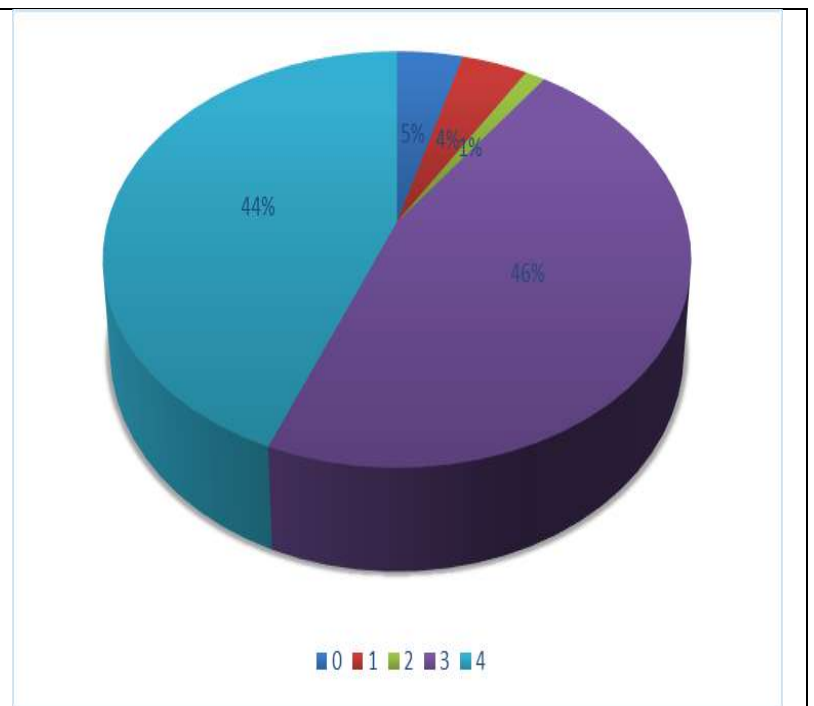
10. Teachers inform you about your expected competencies, course outcomes and programme outcomes.

Scale	Numbers
0– Never	0
1 – Rarely	10
2– Occasionally/Sometimes	27
3 – Usually	69
4 – Every time	126
Total	232

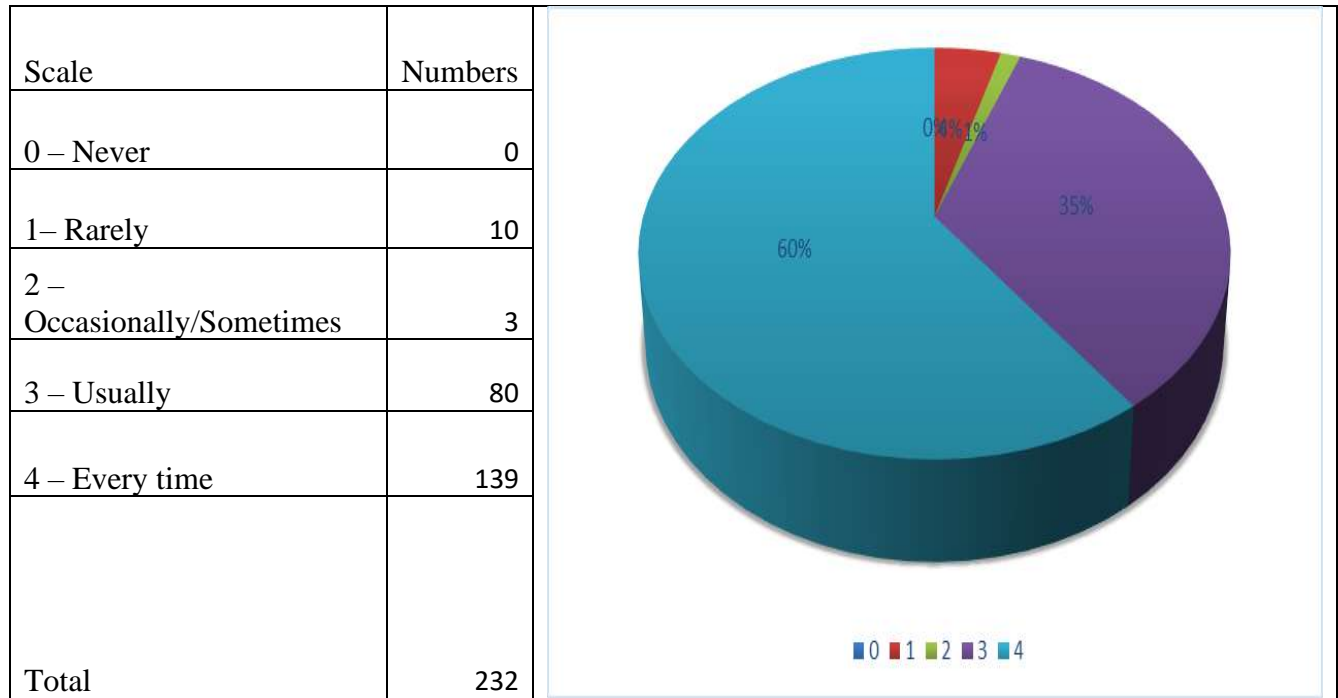


11. Your mentor does a necessary follow-up with an assigned task to you.

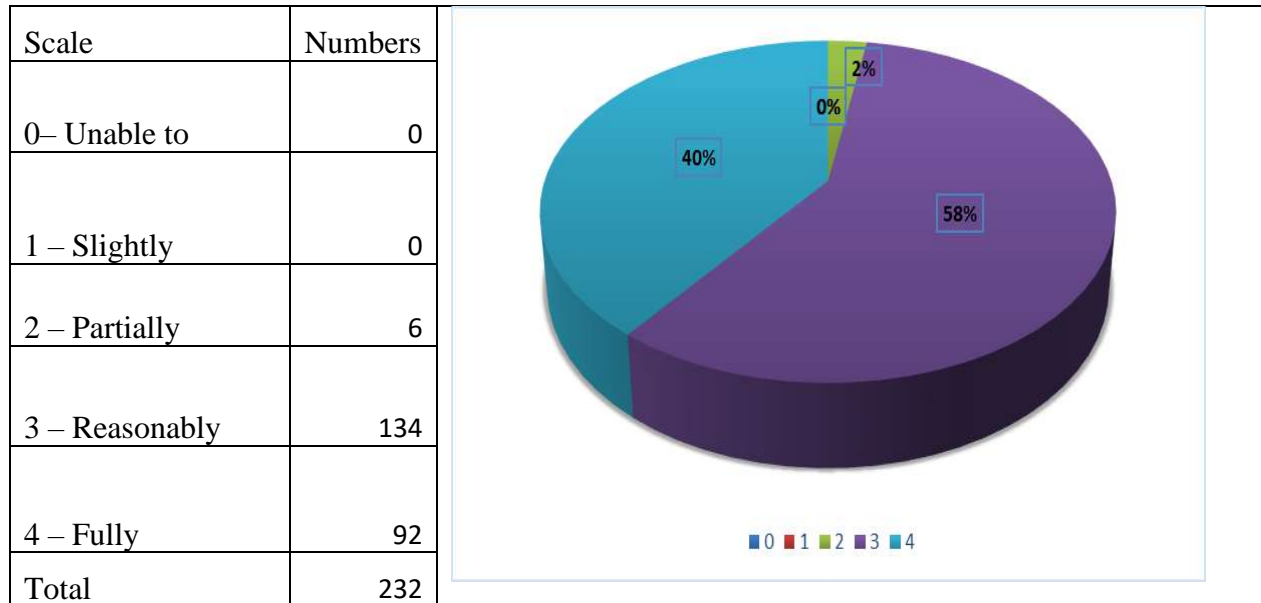
Scale	Numbers
0 – I don't have a mentor	10
1 – Rarely	10
2 – Occasionally/Sometimes	3
3 – Usually	107
4 – Every time	102
Total	232



12. The teachers illustrate the concepts through examples and applications.

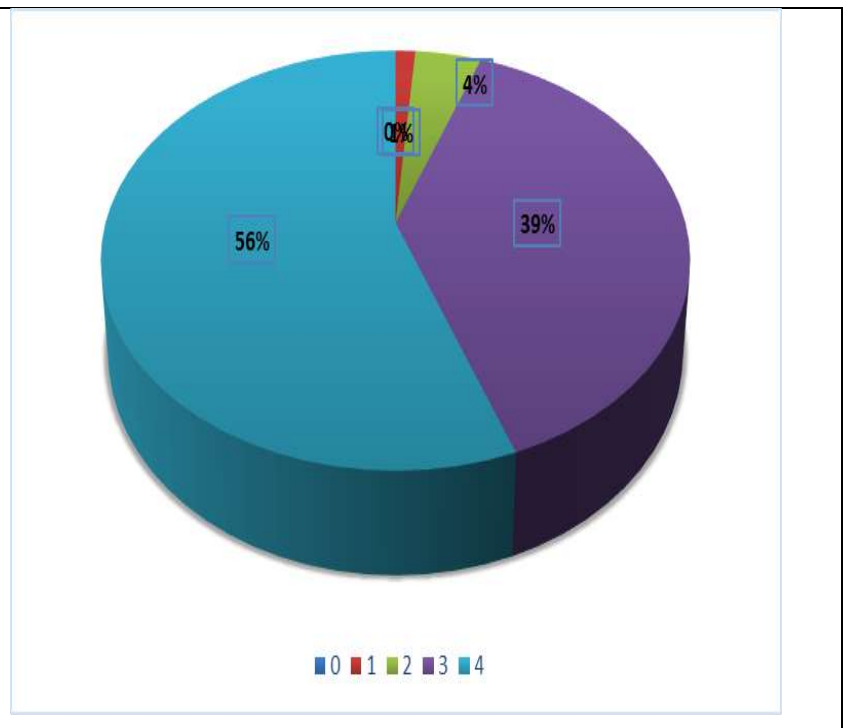


13. The teachers identify your strengths and encourage you with providing right level of challenges.



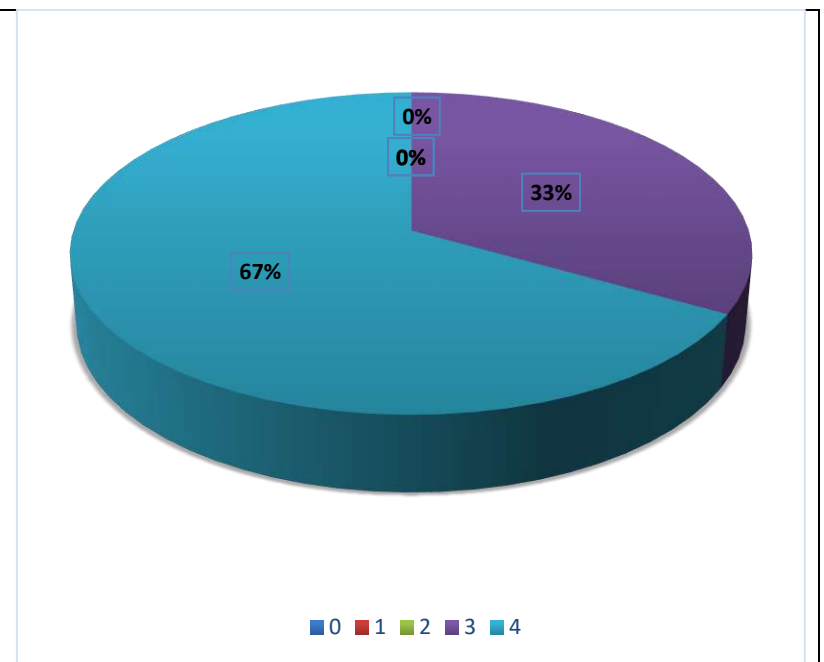
14. Teachers are able to identify your weaknesses and help you to overcome them.

Scale	Numbers
0 – Never	0
1 – Rarely	3
2 – Occasionally/Sometimes	10
3 – Usually	90
4 – Every time	129
Total	232



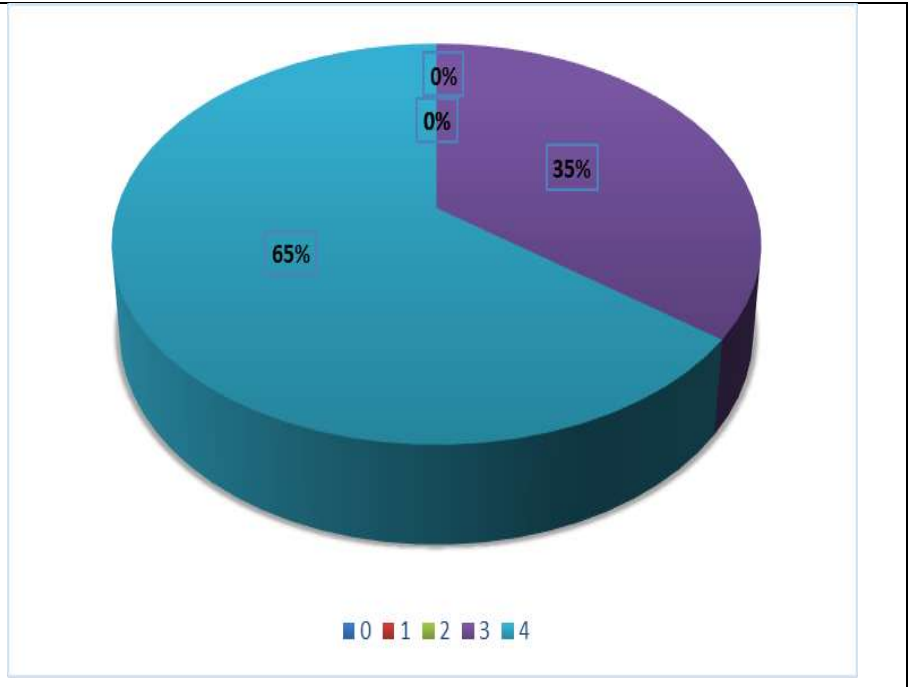
15. The institution makes effort to engage students in the monitoring, review and continuous quality improvement of the teaching learning process.

Scale	Numbers
0 – Strongly disagree	0
1 – Disagree	0
2 – Neutral	13
3 – Agree	67
4 – Strongly agree	152
Total	232



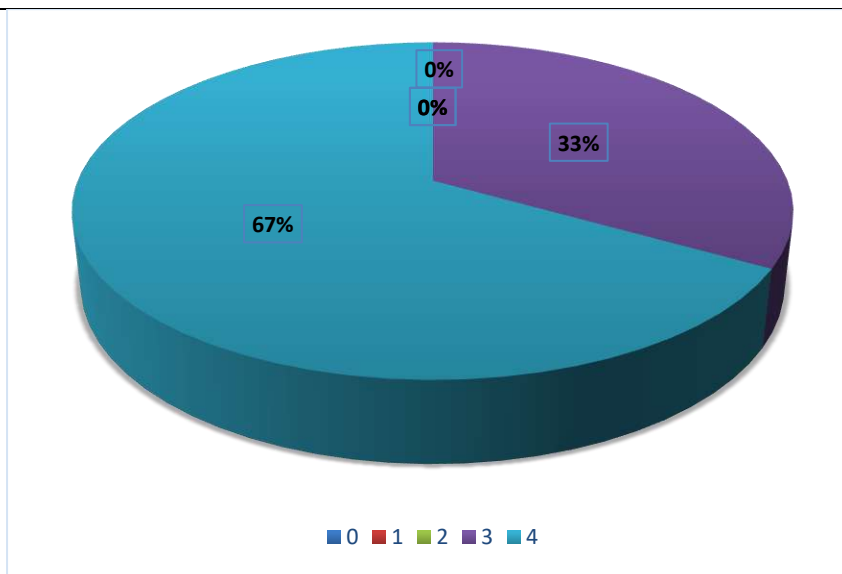
16. The institute/ teachers use student centric methods, such as experiential learning, participative learning and problem-solving methodologies for enhancing learning experiences.

Scale	Numbers
0 – Not at all	0
1 – Very little	0
2 – Some what	0
3 – Moderate	82
4 – To a great extent	150
Total	232



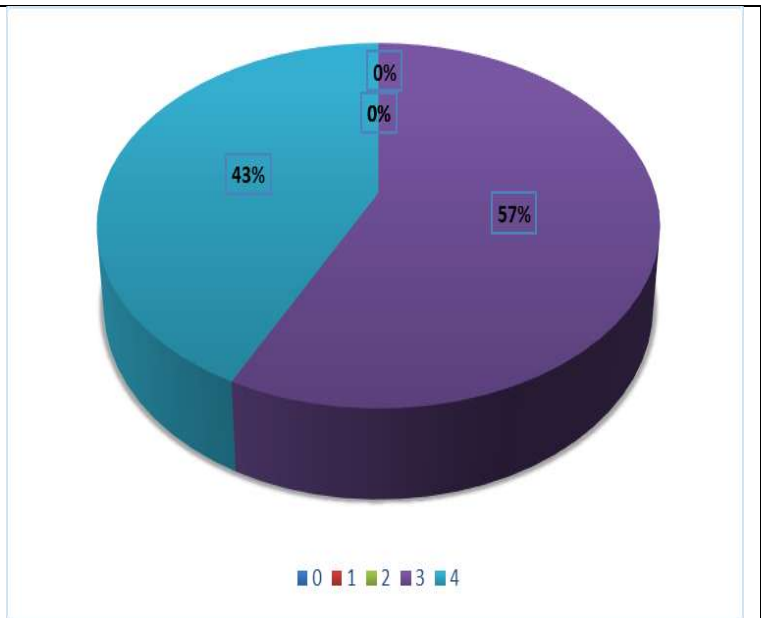
17. Teachers encourage you to participate in extracurricular activities.

Scale	Number s
0 – Strongly disagree	0
1 – Disagree	0
2 – Neutral	13
3 – Agree	56
4 – Strongly agree	163
Total	232



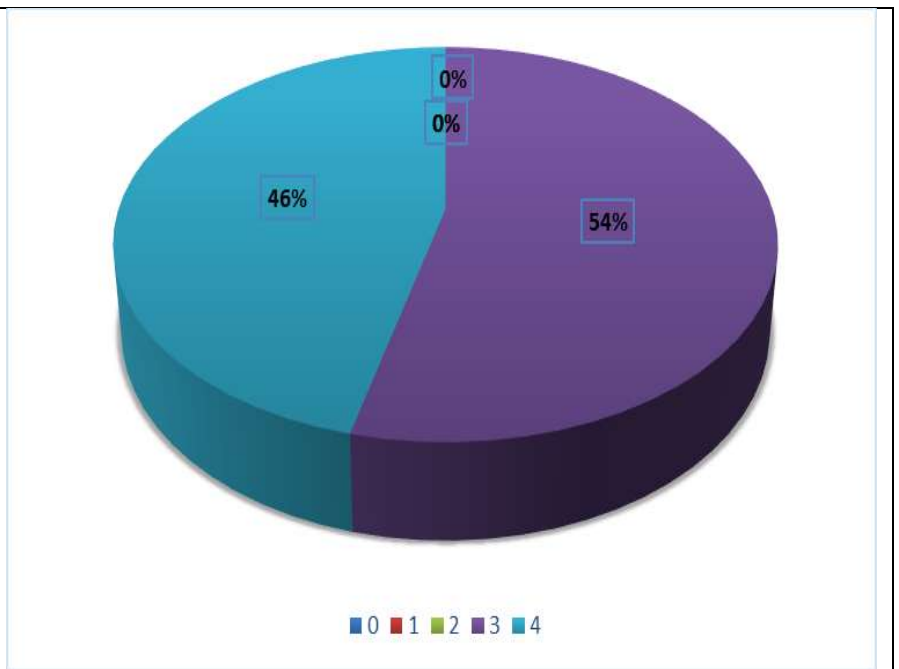
18. Efforts are made by the institute/ teachers to inculcate soft skills, life skills and employability skills to make you ready for the world of work.

Scale	Numbers
0 – Not at all	0
1 – Very little	0
2 – Some what	0
3 – Moderate	133
4 – To a great extent	99
Total	232



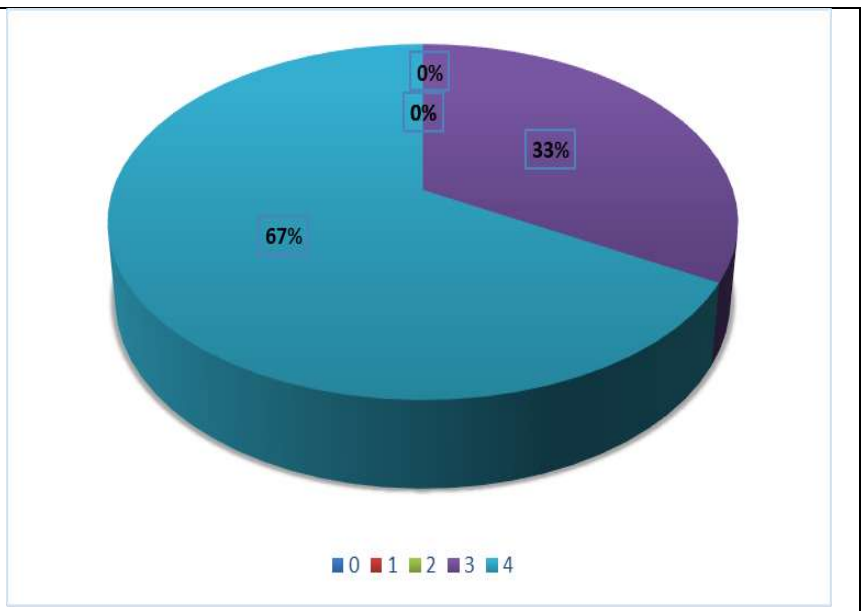
19. What percentage of teachers use ICT tools such as LCD projector, Multimedia, etc. while teaching

Scale	Numbers
0 – Below 29%	0
1 – 30 – 49%	0
2 – 50 – 69%	0
3 – 70 – 89%	125
4 – Above 90%	107
Total	232



20. The overall quality of teaching-learning process in your institute is very good.

Scale	Numbers
0 – Strongly disagree	0
1 – Disagree	0
2 – Neutral	0
3 – Agree	77
4 – Strongly agree	155
Total	232



21. Give three observation / suggestions to improve the overall teaching – learning experience in your institution

- All good
- Very nice college.
- students'are satisfiedwith college activities and functions.