

**Shri M. R. Desai Arts & EELK Commerce
College Chikhli, Dist-Navsari**

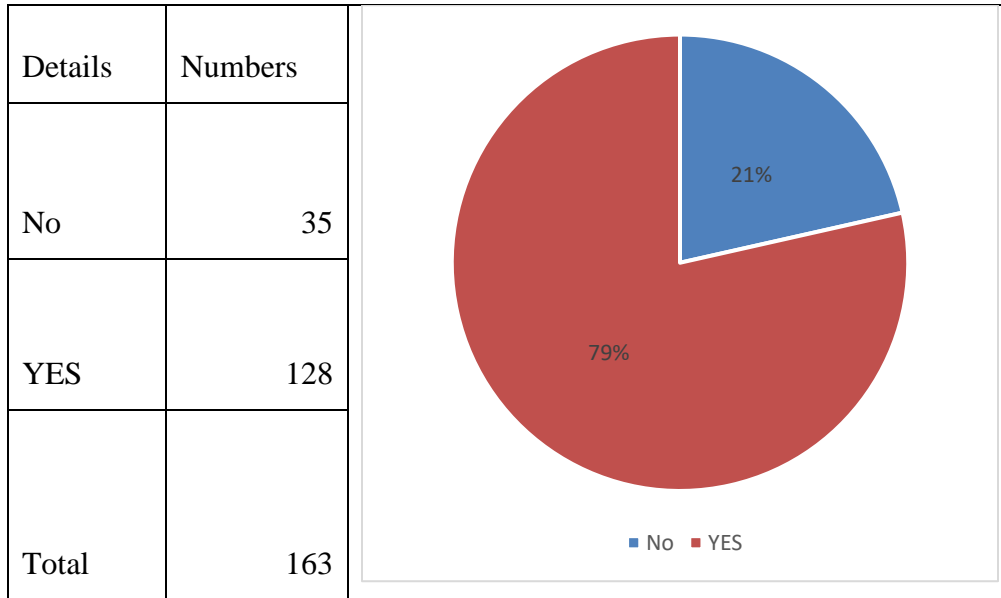


Student Satisfaction Survey (SSS)

2018-19

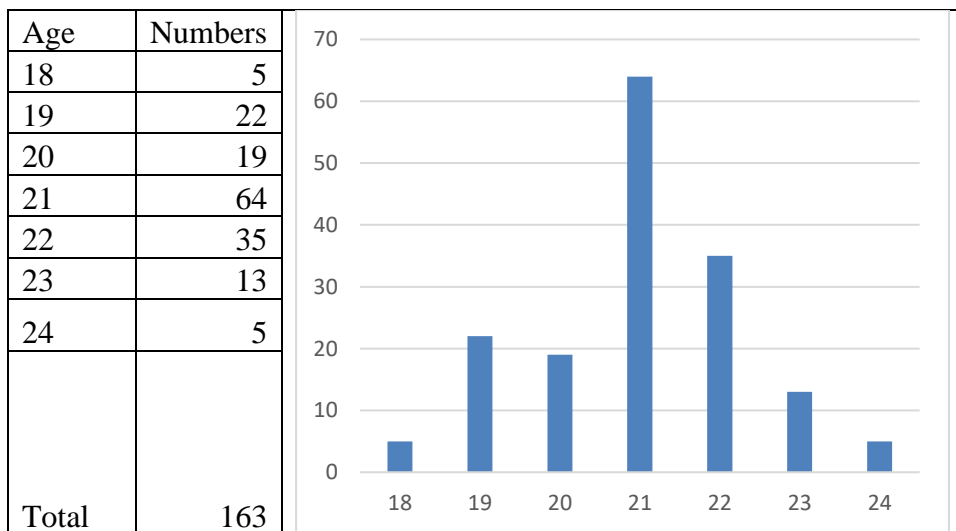
We have conducted a student satisfaction survey-2018-19. In this survey, we got responses from 163 students. An evaluation of this survey is given below.

A Please confirm this is the first and only time you answer this survey.

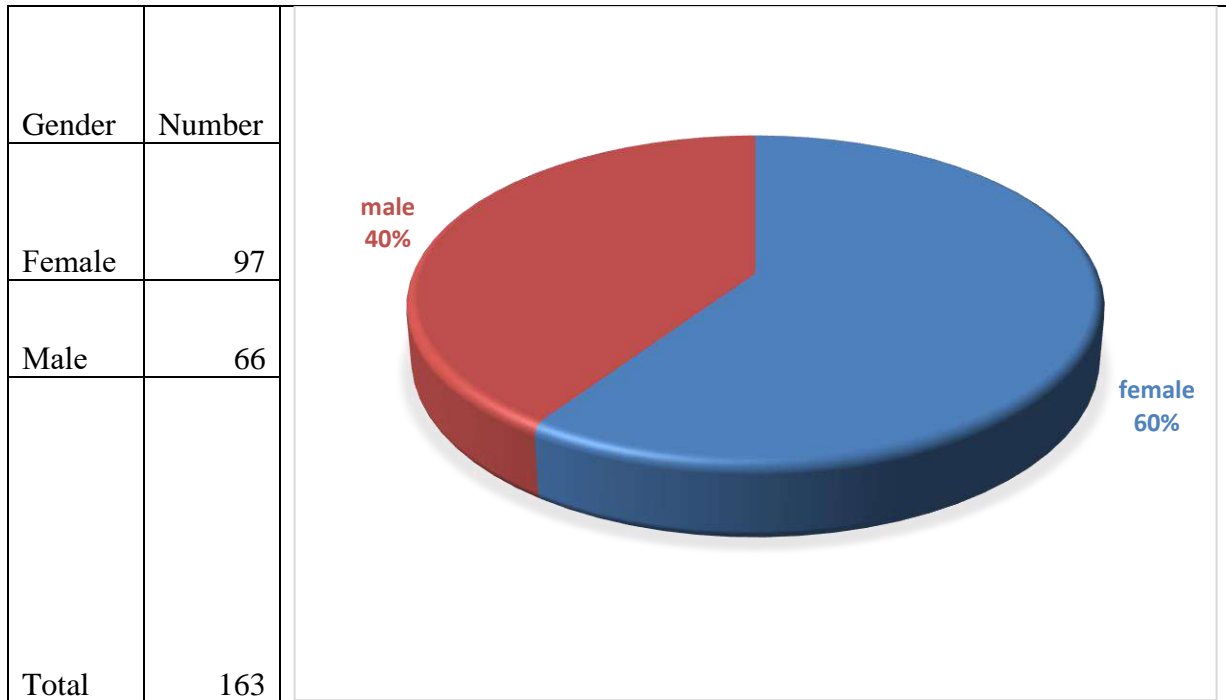


Above information, we conclude that we have 128 students responded yes and 35 students responded no.

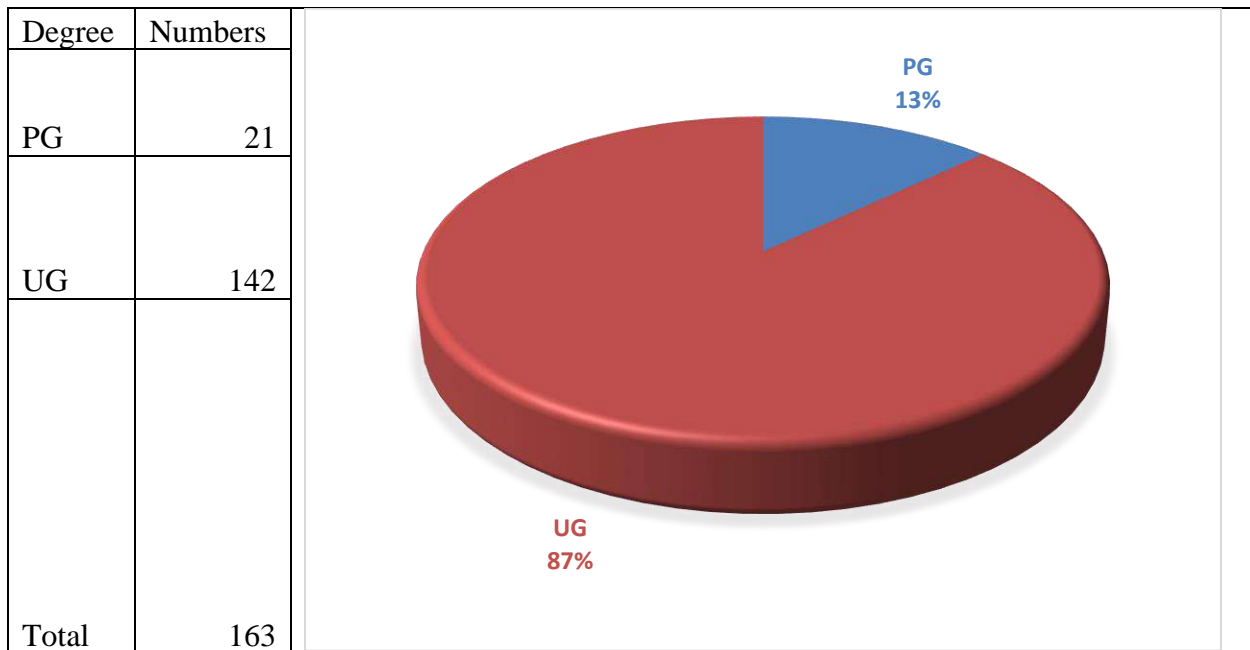
B) Age



C. Gender

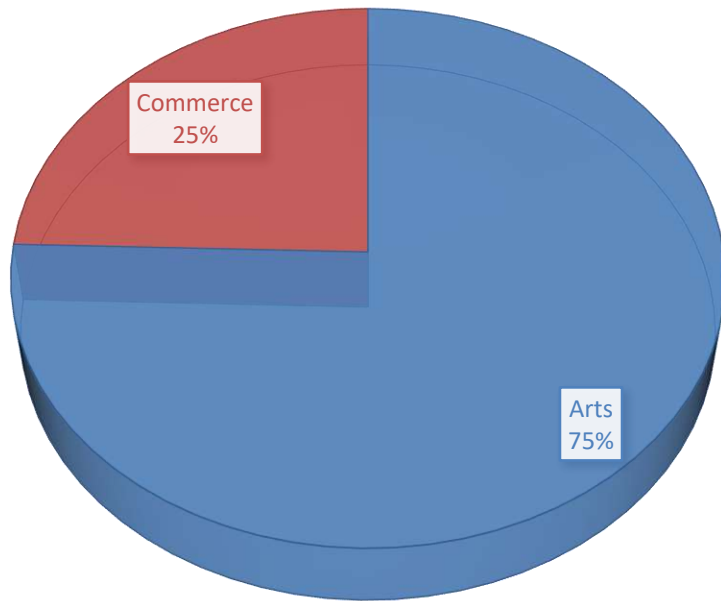


D) What degree program are you pursuing now?



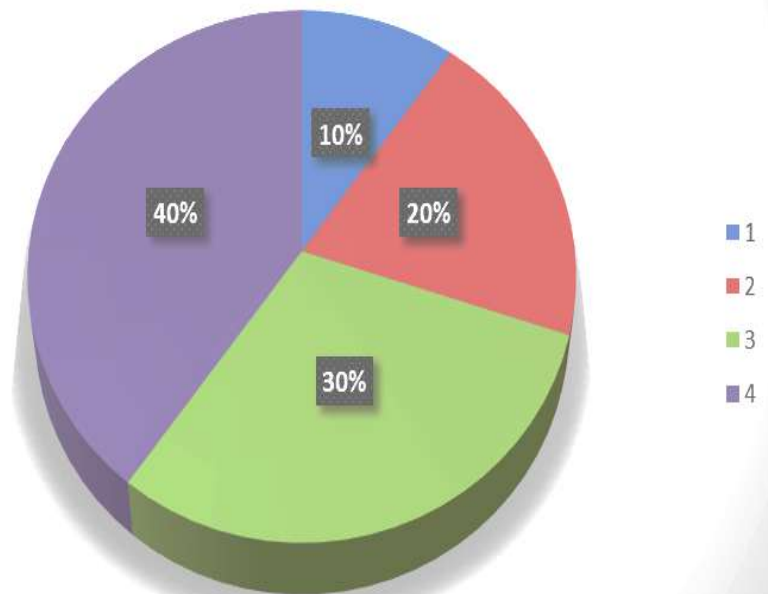
E) What subject area are you currently pursuing?

Stream	Numbers
Arts	123
Commerce	40
Total	163



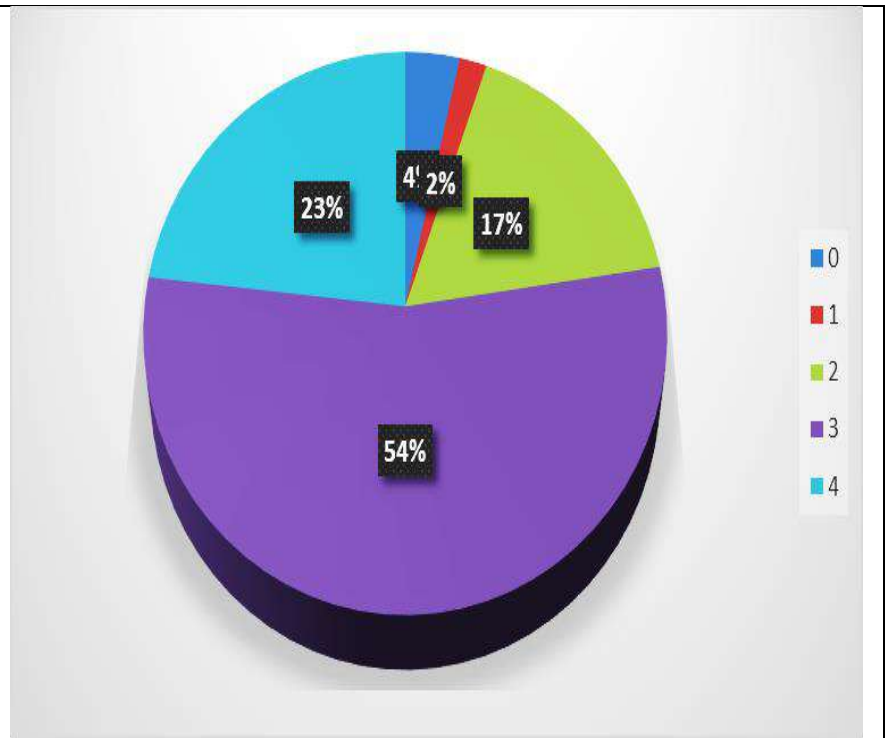
1. How much of the syllabus was covered in the class?

Scale	Numbers
1 – 30 to 54%	3
2 – 55 to 69%	27
3 – 70 to 84%	88
4 – 85 to 100%	45
Totals	163



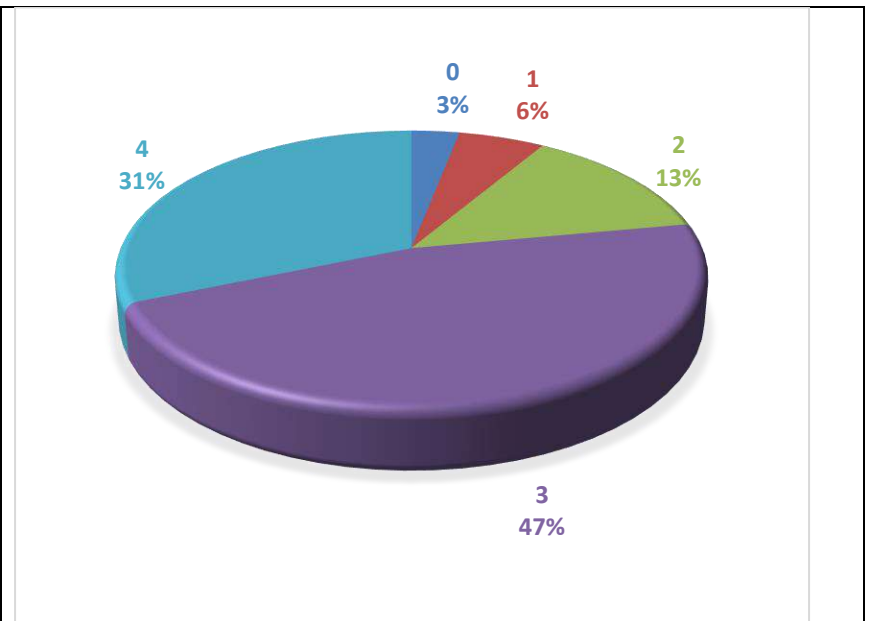
2. How well did the teachers prepare for the classes?

Scale	Numbers
0 – Won't teach at all	6
1 – Indifferently	3
2 – Poorly	28
3 – Satisfactorily	88
4 - Thoroughly	38
Total	163



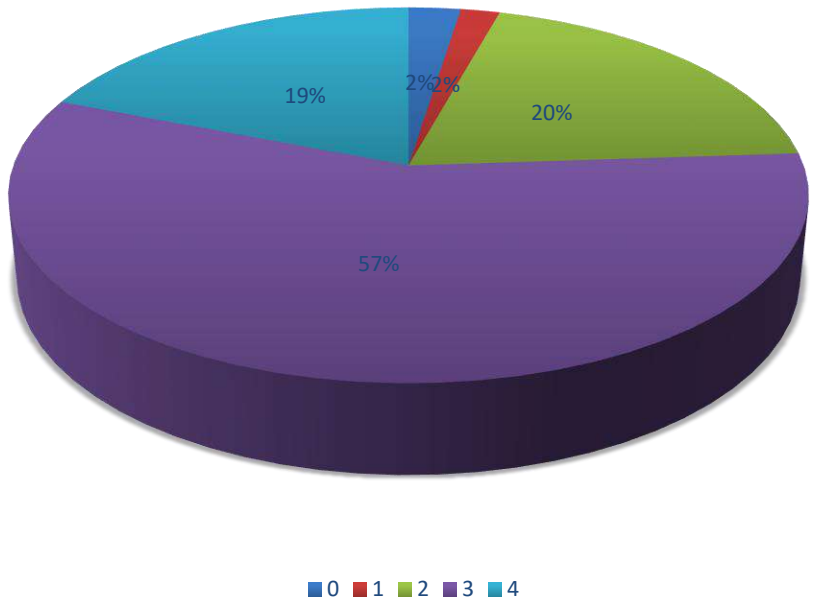
3. How well were the teachers able to communicate?

Scale	Numbers
0– Very poor communication	5
1– Generally ineffective	9
2 – Just satisfactorily	22
3 – Sometimes effective	76
4 – Always effective	51
Total	163



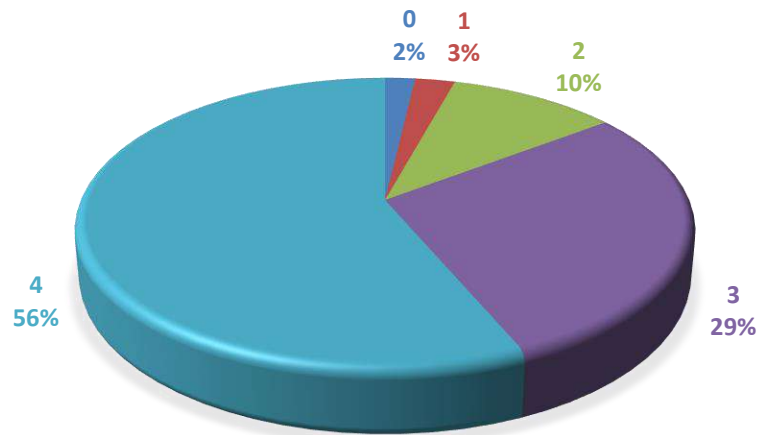
4. The teacher's approach to teaching can best be described as

Scale	Numbers
0- Poor	4
1 - Fair	3
2 - Good	32
3 - Very good	93
4- Excellent	31
Total	163



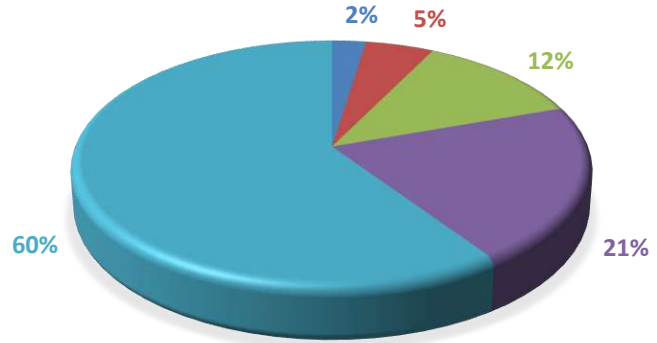
5. Fairness of the internal evaluation process by the teachers.

Scale	Numbers
0- Unfair	3
1 - Usually unfair	4
2 - Sometimes unfair	17
3 - Usually fair	47
4 - Always fair	92
Total	163



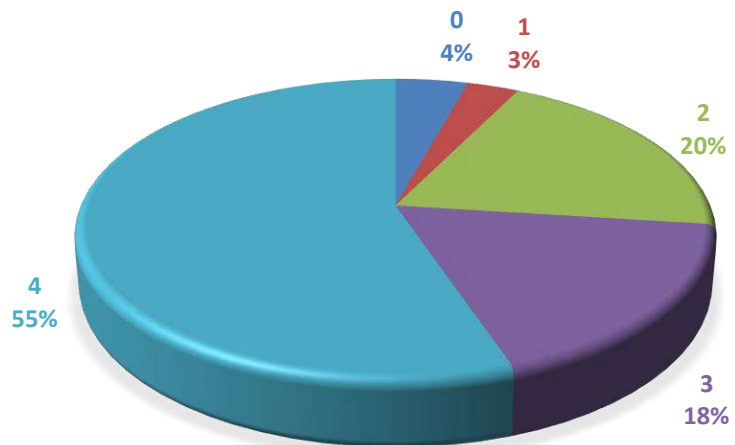
6. Was your performance in assignments discussed with you?

Scale	Number s
0– Never	4
1 – Rarely	8
2 – Occasionally/Sometimes	20
3 – Usually	34
4 – Every time	97
Total	163



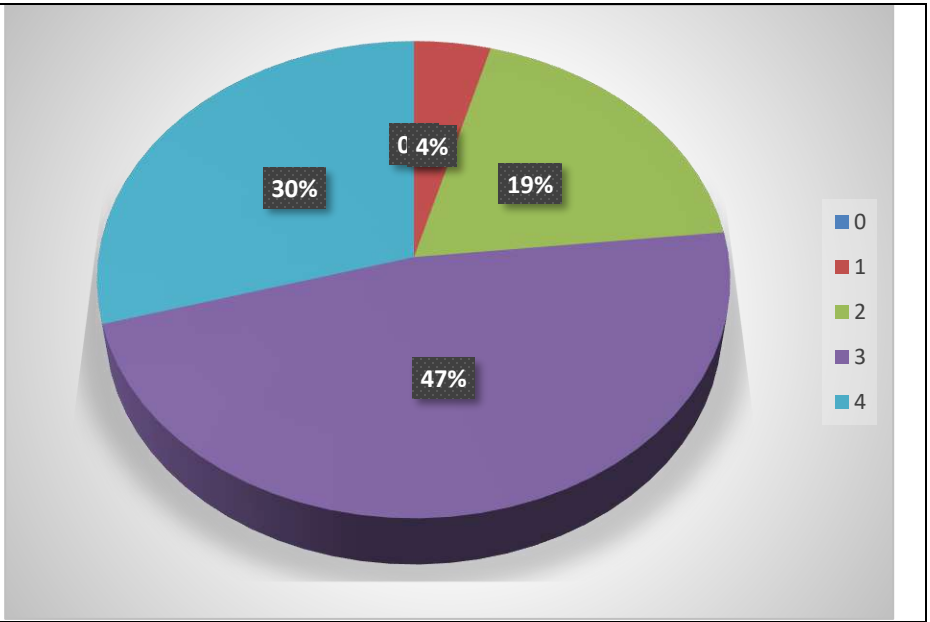
7. The institute takes active interest in promoting internship, student exchange, field visit opportunities for students.

Scale	Number s
0– Never	7
1 – Rarely	5
2 – Sometimes	32
3 – Often	29
4 – Regularly	90
Total	163



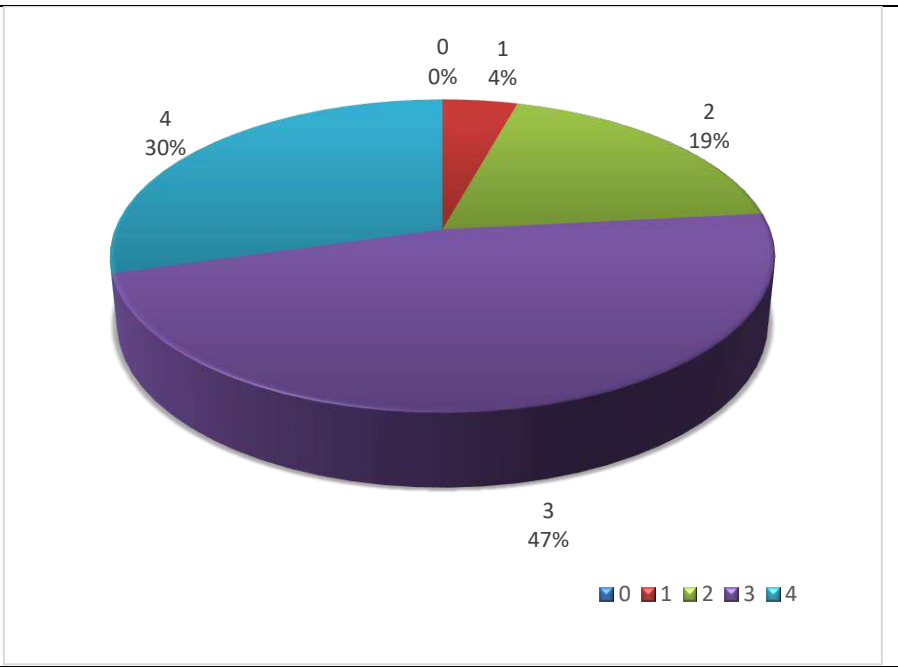
8. The teaching and mentoring process in your institution facilitates you in cognitive, social and emotional growth.

Scale	Numbers
0– Not at all	6
1 – Marginally	6
2 – Moderately	20
3 – Very well	101
4 – Significantly	30
Total	163



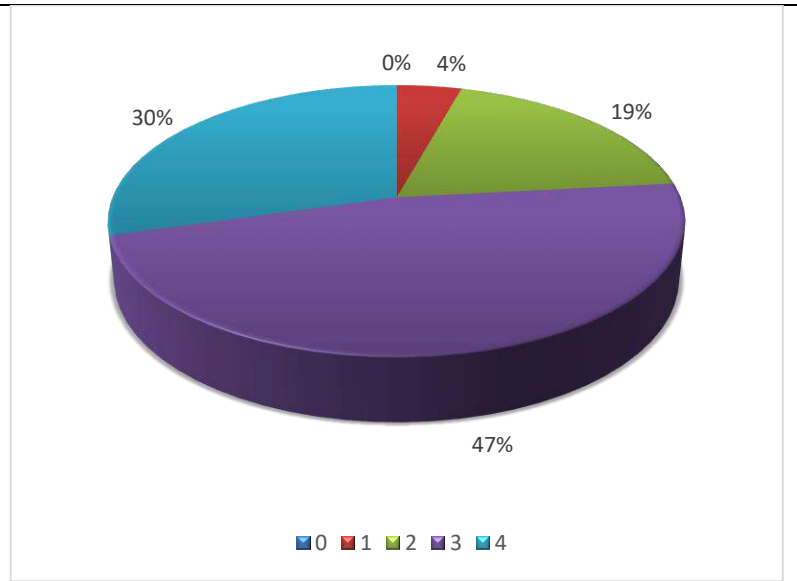
9. The institution provides multiple opportunities to learn and grow.

Scale	Numbers
0– Strongly disagree	3
1 – Disagree	12
2 – Neutral	24
3 – Agree	96
4 – Strongly agree	28
Total	163



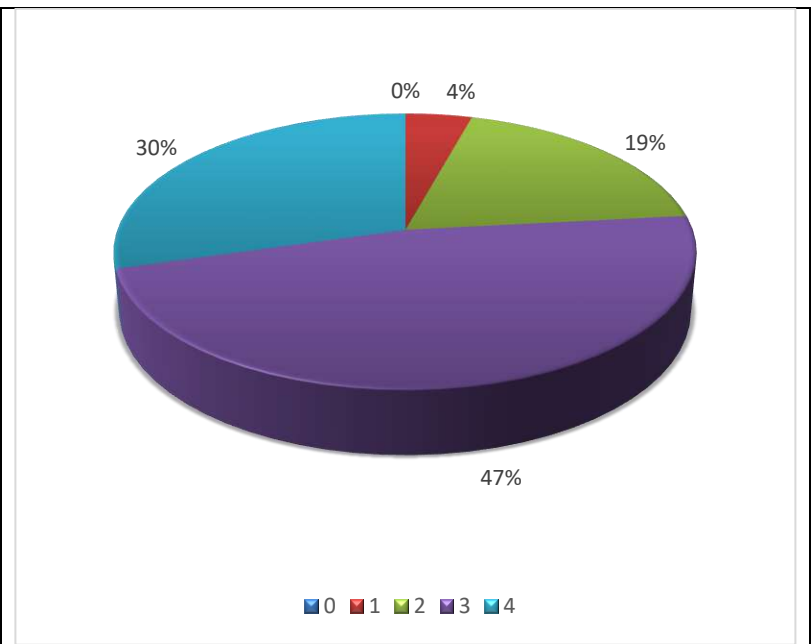
10. Teachers inform you about your expected competencies, course outcomes and programme outcomes.

Scale	Numbers
0– Never	6
1 – Rarely	9
2– Occasionally/Sometimes	20
3 – Usually	73
4 – Every time	55
Total	163



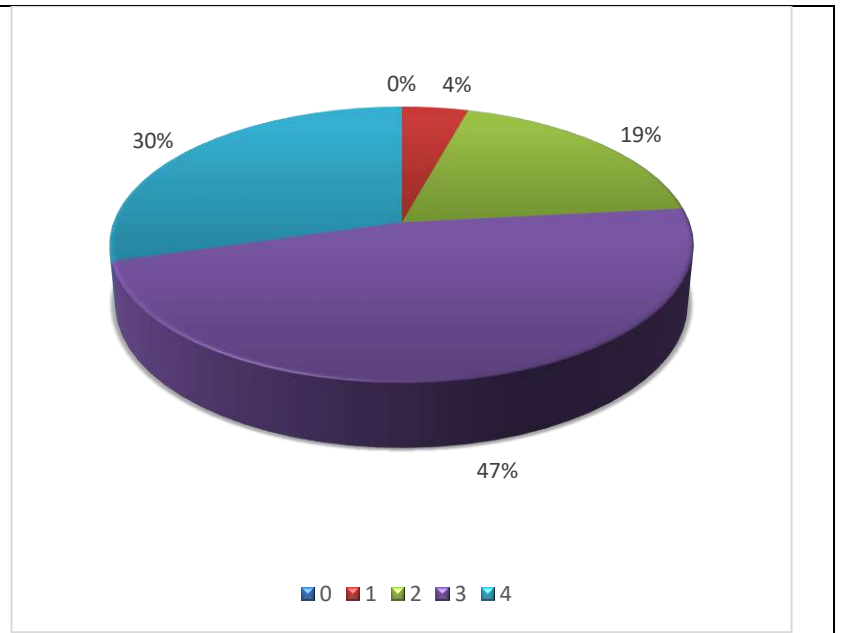
11. Your mentor does a necessary follow-up with an assigned task to you.

Scale	Numbers
0 – I don't have a mentor	4
1 – Rarely	9
2 – Occasionally/Sometimes	30
3 – Usually	70
4 – Every time	50
Total	163



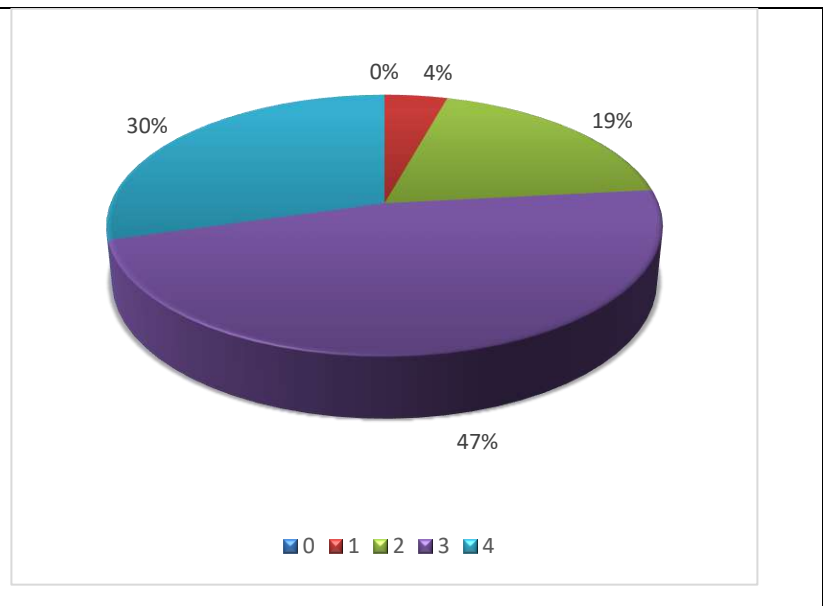
12. The teachers illustrate the concepts through examples and applications.

Scale	Numbers
0 – Never	2
1– Rarely	7
2 – Occasionally/Sometimes	31
3 – Usually	52
4 – Every time	71
Total	163



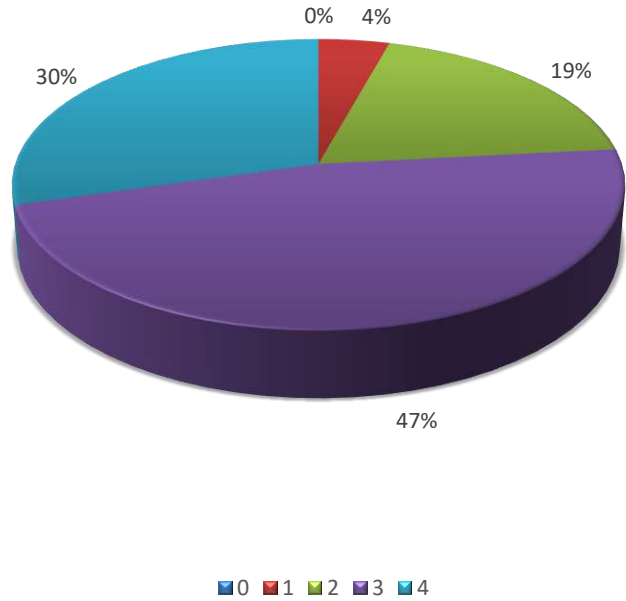
13. The teachers identify your strengths and encourage you with providing right level of challenges.

Scale	Numbers
0– Unable to	6
1 – Slightly	13
2 – Partially	20
3 – Reasonably	68
4 – Fully	56
Total	163



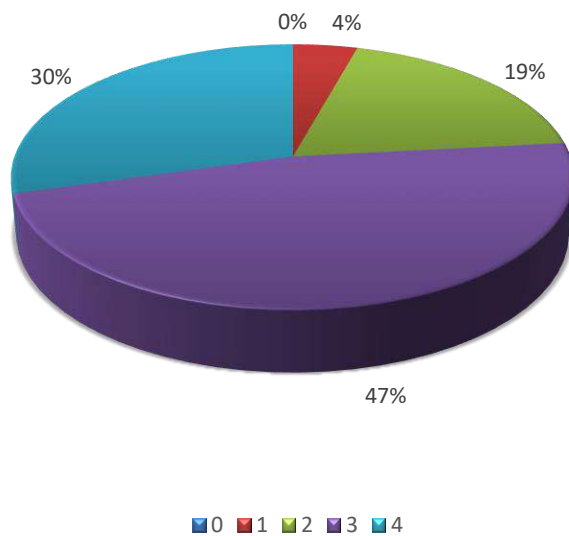
14. Teachers are able to identify your weaknesses and help you to overcome them.

Scale	Numbers
0 – Never	7
1 – Rarely	11
2 – Occasionally/Sometimes	27
3 – Usually	52
4 – Every time	66
Total	163



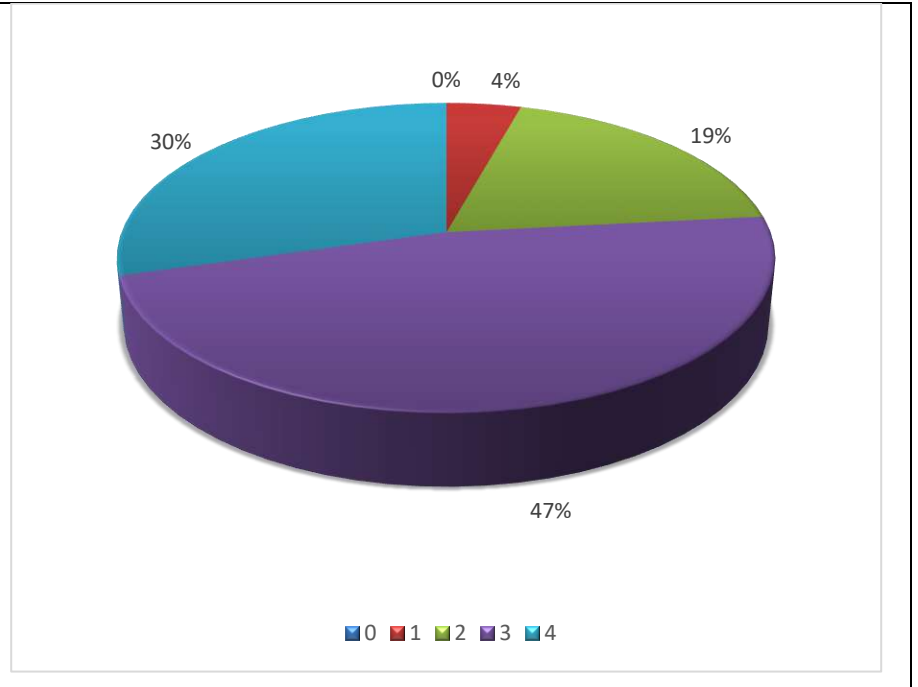
15. The institution makes effort to engage students in the monitoring, review and continuous quality improvement of the teaching learning process.

Scale	Numbers
0 – Strongly disagree	4
1 – Disagree	7
2 – Neutral	27
3 – Agree	71
4 – Strongly agree	54
Total	163



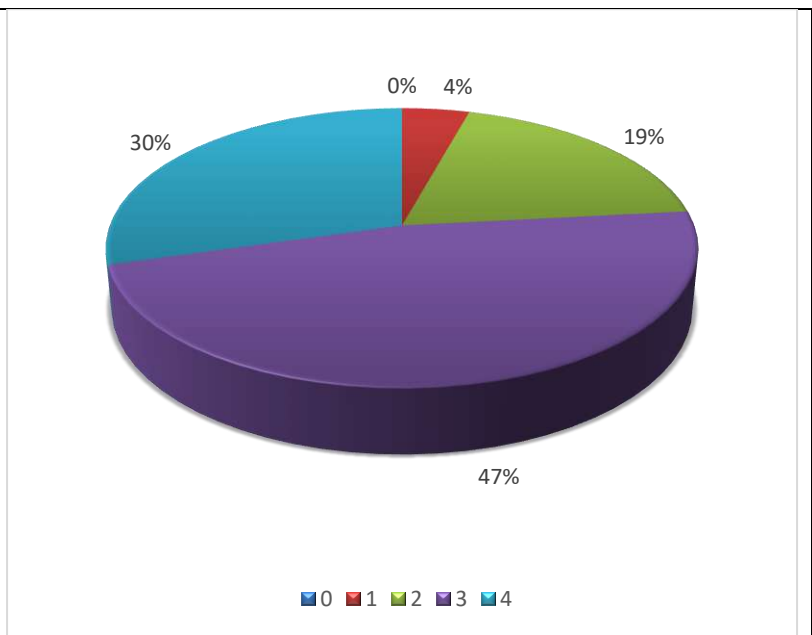
16. The institute/ teachers use student centric methods, such as experiential learning, participative learning and problem-solving methodologies for enhancing learning experiences.

Scale	Numbers
0 – Not at all	5
1 – Very little	10
2 – Some what	25
3 – Moderate	75
4 – To a great extent	48
Total	163



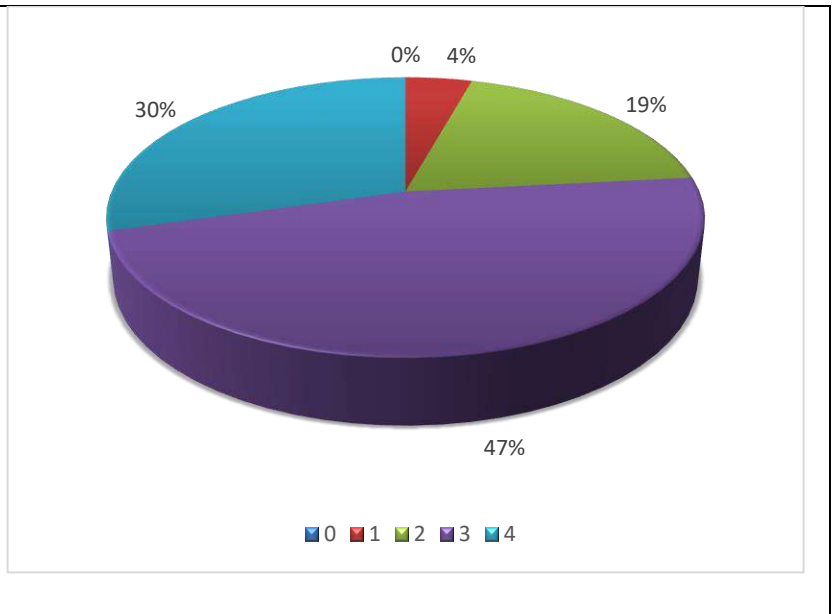
17. Teachers encourage you to participate in extracurricular activities.

Scale	Number s
0 – Strongly disagree	4
1 – Disagree	8
2 – Neutral	26
3 – Agree	85
4 – Strongly agree	40
Total	163



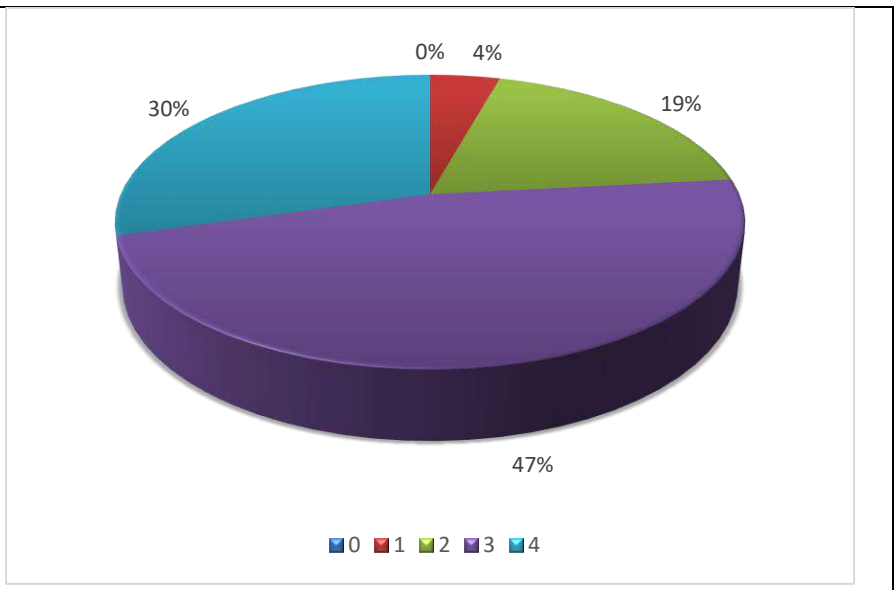
18. Efforts are made by the institute/ teachers to inculcate soft skills, life skills and employability skills to make you ready for the world of work.

Scale	Numbers
0 – Not at all	2
1 – Very little	10
2 – Some what	22
3 – Moderate	62
4 – To a great extent	67
Total	163



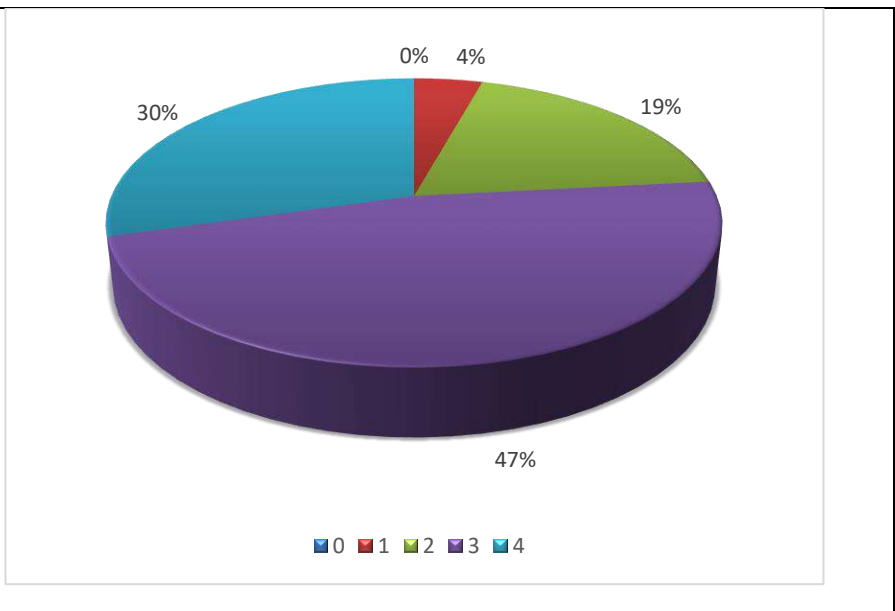
19. What percentage of teachers use ICT tools such as LCD projector, Multimedia, etc. while teaching

Scale	Numbers
0 – Below 29%	1
1 – 30 – 49%	3
2 – 50 – 69%	37
3 – 70 – 89%	87
4 – Above 90%	35
Total	163



20. The overall quality of teaching-learning process in your institute is very good.

Scale	Numbers
0 – Strongly disagree	0
1 – Disagree	7
2 – Neutral	31
3 – Agree	77
4 – Strongly agree	48
Total	163



21. Give three observation / suggestions to improve the overall teaching – learning experience in your institution

- All good
- Very nice college.
- students' are satisfied with college activities and functions.